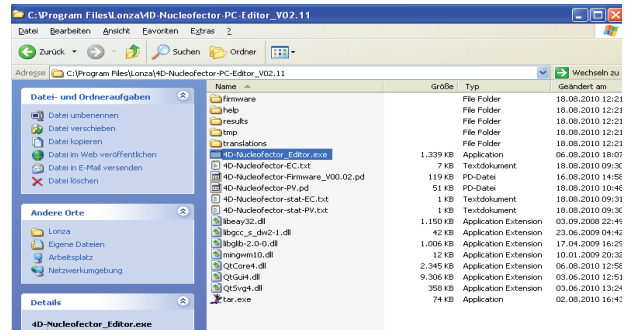


Installation of the 4D-Nucleofector® PC-Editor

It is not required to run an installation routine to install the 4D-Nucleofector® PC-Editor on your PC. Just follow the steps below to get the software onto your hard disk drive:

- Insert 4D-Nucleofector® User Information CD into the CD drive of your PC
- Copy all files from the 4D-Nucleofector® PC-Editor software folder to your hard disk – preferably into a folder called 4D-Nucleofector® PC-Editor
- Open the folder, search the file called “4D-Nucleofector_Editor” and double click on it to start the software (1)
- A window will appear displaying the Graphical User Interface of the 4D-Nucleofector® PC-Editor
- Functionality of the PC-Editor matches with the operation of the 4D-Nucleofector® Software
- Use the PC-Editor to set-up experiments as described in the 4D-Nucleofector® Manual
- To transfer experiments edited with the PC-Editor please follow instruction on next page

1

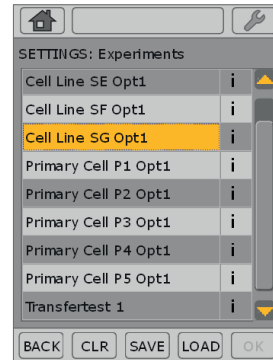


Transfer of experiments from the PC-Editor

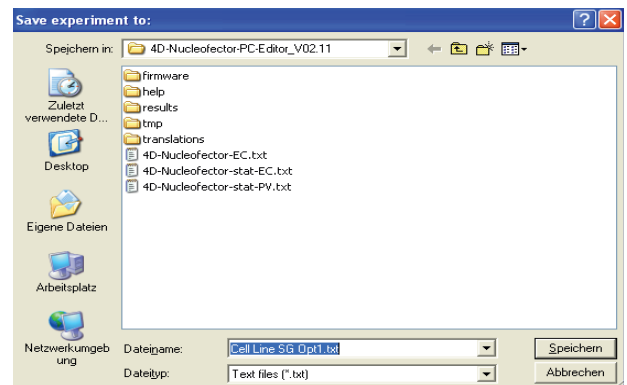
- Open PC-Editor by double clicking on the file **4D-Nucleofector_Editor.exe**
- Define and save your experiment with the PC-Editor as described in the device manual
- Plug USB stick into a USB port of your PC
- Open the “SETTING” menu by pressing the Core icon and select the menu “Experiments”
- Select your new experiment by clicking the appropriate field [2]
- This will activate the “CLR” and the “SAVE” keys of the PC-Editor
- Press “SAVE”
- A Windows Explorer screen will open allowing to save the experiment to the appropriate location [3]
- Select the USB stick and press “SAVE”
- Unplug the USB stick from you PC as soon as the experiment file has been saved. Do not unplug the stick while saving!
- Turn on the 4D-Nucleofector®
- Plug USB stick with new experiment into the USB port at the front of the Core Unit [4]
- Press the Core Icon to open the “SETTINGS” menu [5]
- Press “EXPERIMENTS” to open the experiment menu
- Press “LOAD”
- A screen appears displaying “Load experiment from” [6]
- Select the USB stick by double clicking on “USB A”
- Select your experiment and press “OK” to load it
- Press “OK” to leave the experiment menu

Your new experiment is now saved onto the 4D-Nucleofector® and can be used as described in the device manual.

2



3



4



5



6

